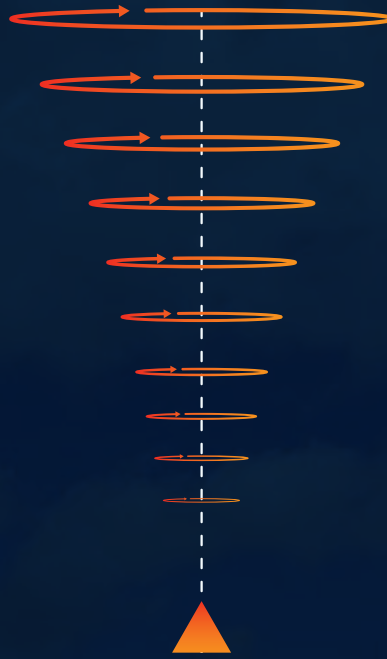


The easier
way to
measure
wind.



 Measurement
Services





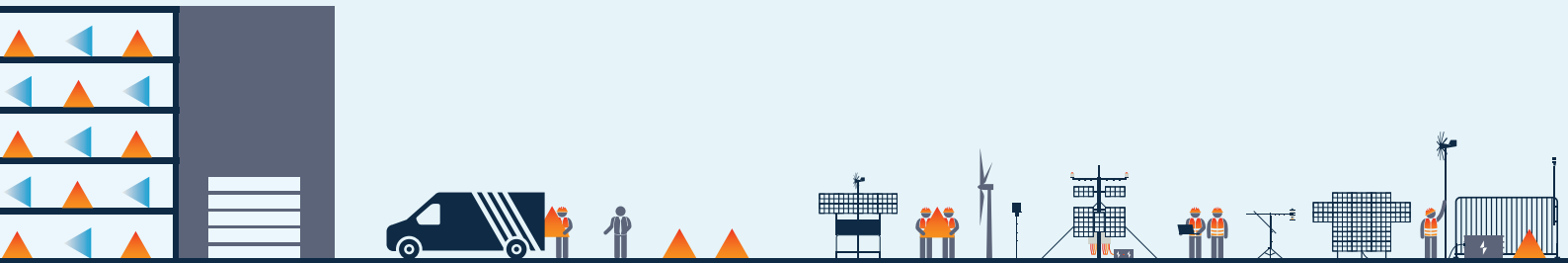
ZX Measurement Services

At ZX Measurement Services, our primary focus is the acquisition of the highest quality data with the lowest measurement uncertainty.

Our team has over 80 years combined experience in the installation and management of measurement systems, ensuring all measurement campaigns are designed and delivered to exactly meet our customer's needs whilst optimising new and existing technologies to provide comprehensive data sets.

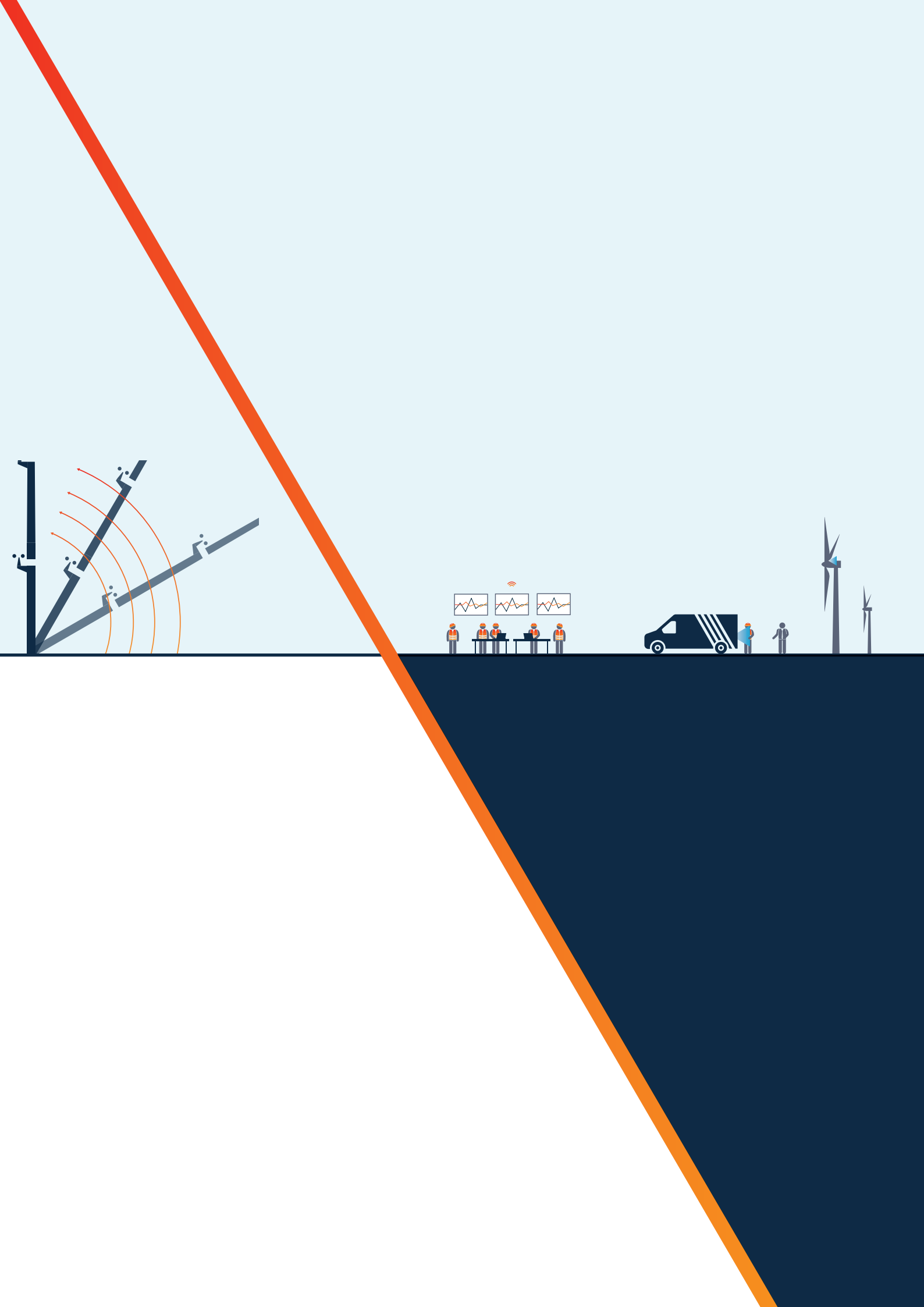
**Our promise to our customers is simple:
Excellence in measurements and project data.**

Wind Data as a Service



We provide the following extensive field and back office support services:

- Lidar Rental – onshore.
- Lidar Rental – turbine mounted.
- Lidar Fleet Management.
- Field Services – including system installation, management and decommissioning.
- Met Mast Installation Services.
- ZX Power.
- ZX Data Portal.
- Solar Resource Assessment and Solar Monitoring.
- Bespoke Noise Monitoring packages.
- Data Management, Analysis and Reporting.
- Measurement Campaign Optimisation – including system security configuration, communications and security.



Lidar rental Onshore

Lidars when you need them,
not when you don't.



Ground Based Lidar Rental

Deploy industry-leading wind Lidars for your onshore wind projects with our flexible, turn-key rental service.

Our rental services give you all the benefits of advanced wind measurement technology without the long-term commitment.

**Reliable wind data, wherever your project takes you.
You own the data, we own the equipment.**

Why rent Ground Based Lidars?

Up-to-date Technology

Access the latest wind measurement equipment, whenever you need it.

Cost-Efficient

Avoid upfront investment and ongoing maintenance costs.

Flexible Terms

Rental packages designed for short-term or long-term campaigns, with full support from our expert team.

Rapid Deployment

Pre-calibrated, pre-configured ground-based wind Lidar units available at short notice, ready for rapid installation.

Turn-Key Packages

ZX Measurement Services can handle everything: installation, hybrid power supply, secure communications, and monitoring.

Trusted and Accepted Technology

ZX wind Lidars have decades of extensive field use and industry validation, ensuring accurate, reliable wind measurements for every campaign.

Expert Support

From installation to data QA, our specialists ensure accurate, reliable campaigns from start to finish.



Technical specification

Lidar technology	ZX 300	ZX 300e
Range	10-300 metres (Lidar measurement) 0-10 metres (onboard met weather station)	10-300 metres (Lidar measurement) 0-10 metres (onboard met weather station)
Heights measured	10 User configurable 1 Additional met weather station measurement	10 User configurable 1 Additional met weather station measurement
Power consumption	69W	44W
Classification	IEC 61400-50-2 0% standard uncertainty, 30-100m	IEC 61400-50-2 0% standard uncertainty, 21-200m



Lidar rental Turbine-mounted

Lidars when you need them,
not when you don't.



Nacelle Based Lidar Rental

Accurately measure the wind directly at the rotor with the ZX TM wind Lidar. ZX Measurement Services provides flexible turbine-mounted Lidar rental so you can precisely measure wind flow across the full rotor area and turbine performance, without the long-term commitment of ownership.

**Reliable wind data, wherever your project takes you.
You own the data, we own the equipment.**

Why rent nacelle-based Lidars?

Up-to-date Technology

Access the latest turbine-mounted Lidar systems, whenever you need it.

Cost-Efficient

Gain the benefits of industry-leading measurement systems without the need to purchase, maintain, or calibrate equipment.

Flexible Terms

Rental packages designed for short-term or long-term campaigns, with full support from our expert team.

Rapid Deployment

Pre-calibrated, pre-configured ZX TM units available at short notice, ready for installation on any turbine.

Turn-Key Packages

ZX Measurement Services can handle everything: installation, hybrid power supply, secure communications, and monitoring.

Trusted and Accepted Technology

Recognised and used by OEMs and consultants worldwide; ZX TM Lidars are deployed across Europe, Asia, and the Americas.

Expert Support

From installation to data QA, our specialists ensure accurate, reliable campaigns from start to finish.



Technical specification

Lidar technology

ZX TM

Configuration

17 horizontal ranges with configurable dwell times
15 vertical slices at each range across the rotor disk

Wind characteristics

Wind speed, shear, veer, wind yaw misalignment, turbulence, rotor equivalent wind speed (REWS), windflow complexity

Measurement range

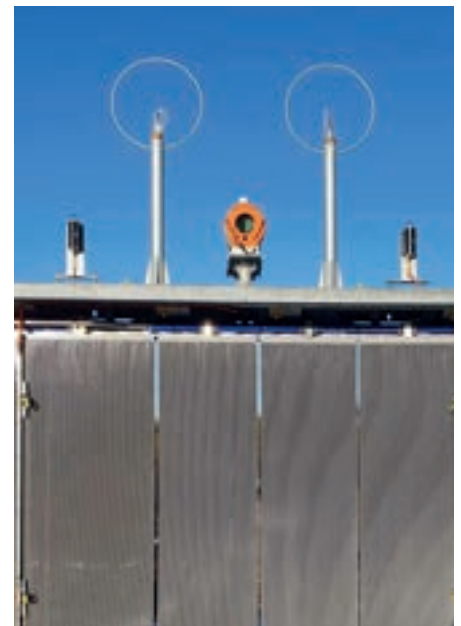
10m-550m

User Interface

Web-based interface via laptop, mobile or tablet

Classification

IEC 61400-50-3



ZX Power

Reliable off-grid power, anywhere you need it.



Autonomous Hybrid Power

ZX Power is designed specifically to keep your wind Lidars operating reliably, safely, and continuously in the most remote locations.

Powered by the latest EFOY Pro methanol fuel cell technology, combined with solar and wind charging, intelligent energy management, and real-time communications, ZX Power ensures maximum uptime and dependable performance.

Simply put, without power there is no data.

Why Choose ZX Power?

Proven Reliability

Autonomous hybrid power with intelligent energy management and real-time communications.

Hybrid Autonomy

Solar, wind, and battery power systems combined for year-round availability tailored to the site-specific, local environment.

Intelligent Energy Management

Smart controls optimise power use and extend system life.

Remote Monitoring

Real-time communications provide full visibility of performance and energy status. Combined with our Field Services, our experts can proactively monitor, resolve, and manage any power issues.

Flexible Deployment and Procurement

Power systems tailored to your site, climate, and project duration. Available for rental or purchase.

Installation and commissioning

On site as part of turn-key project delivery.

Scheduled servicing

And preventative maintenance as required.

Technical specification

EFOY Fuel Cell

EFOY Pro 2800 – Maximum output power 125W

Solar PV Panels

Standard set up consists of 3x360W and 2x55W 24V panels, with the option to specify bespoke configurations depending on site requirements

Wind Turbine Generator

Rutland FM910-4 24V wind charger gives a charge current of up to 6A with a wind speed of 16m/s

Fuel Capacity

4xM28 Methanol Cartridges giving a total capacity of 112 litres

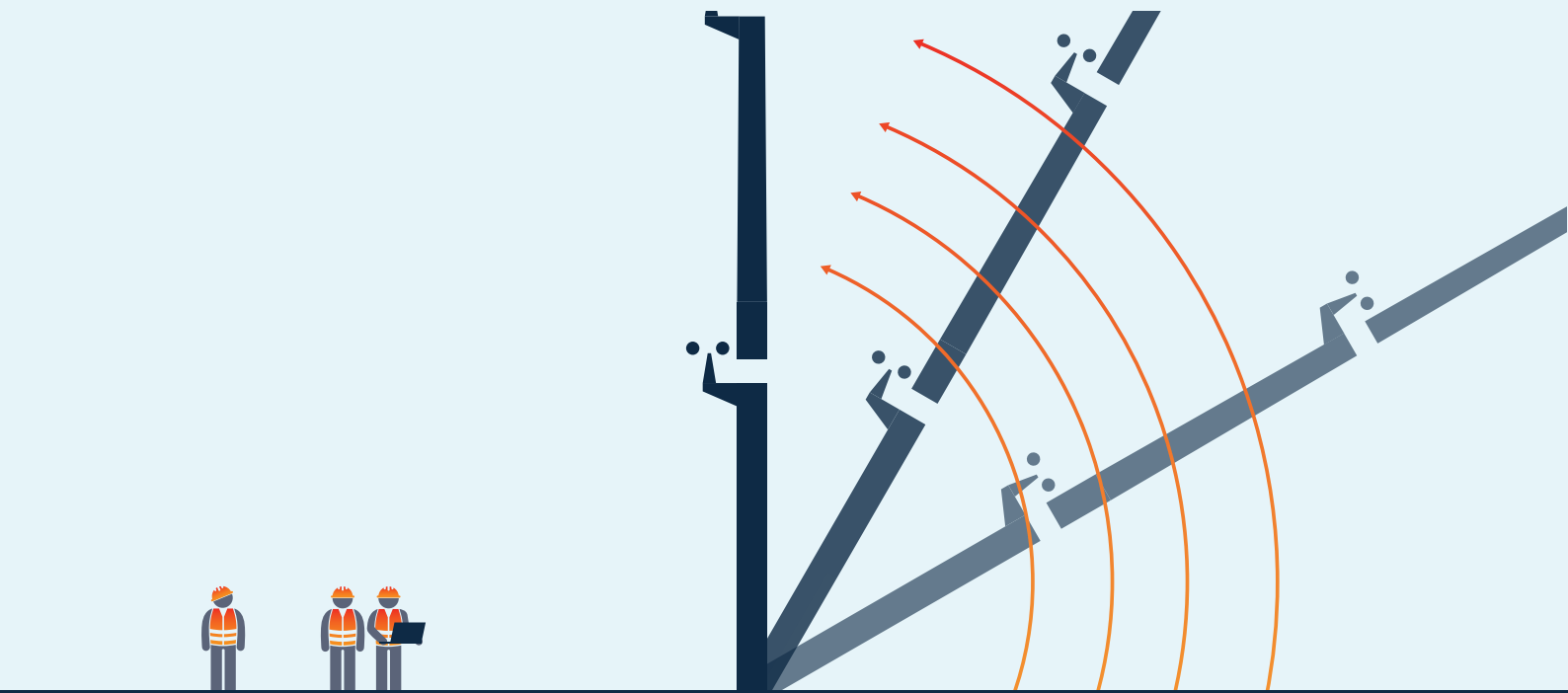
Battery Capacity

4xAGM 128 Ah batteries



Met Mast Installation Services

Fully managed met mast installs, done the safe way.



Masts for Wind Measurements

ZX Measurement Services provides a fully managed meteorological mast service, delivering the safe installation and operation of met masts in excess of 140 metres above ground level.

Your choice of aluminium tilt-up or stacked lattice designs, engineered for optimal performance, durability, and safety.

Confidence in both safety and data integrity.

Turn-Key Met Mast Services

Our comprehensive service covers every stage of your measurement campaign:

Dedicated Project Management

One point of contact for full oversight of your campaign.

Trusted Installation Partners

Selected and managed to meet rigorous safety and quality standards.

Procurement, Testing, and Installation

Complete mast and sensor deployment from start to finish.

Comprehensive Site Survey and Installation Reports

Full documentation for audit and compliance.

Weekly Data QC and Monthly Reporting

Continuous quality assurance for reliable datasets.

Decommissioning

Safe equipment.

Technical specification

At ZX MS, we understand that every wind project is unique. That's why we offer two flexible approaches for your wind measurement needs:

Standard IEC-Compliant Packages

For clients seeking proven, industry-standard solutions, we provide fully compliant configurations aligned with IEC 61400-50-1 guidelines.

Custom-Built Systems

We design and deliver bespoke mast instrumentation configurations tailored to your site, project goals, and technical requirements.

Whether you need a tailored system for complex terrain or a ready-to-deploy package for rapid implementation, ZX MS ensures precision, reliability, and compliance every time.

ZX MS offers two robust mast solutions to meet your project requirements. Both options are custom designed for each project location and engineered for safety, durability, and compliance with international standards.

Aluminium Lattice Tilt-Up Masts

Lightweight, rapid deployment, ideal for temporary campaigns and sites with challenging access.

Traditional Stacked Lattice Masts

Heavy-duty, permanent installations designed for long-term monitoring and maximum stability.



ZX Data Portal

Seamless, secure and smart wind data management.



Key Benefits

- Seamless integration with wind Lidars, Sodars, and met masts, providing a unified view of all your measurement data.
- Automated Quality Control for repeatable, rules-based data processing aligned with manufacturers' guidelines, ensuring consistent and reliable data.
- Collaborative access by allowing shared access to campaigns and the latest data collected.
- Efficient reporting on demand streamlining communication with stakeholders.
- Interactive logbook documenting campaign activities and observations, enhancing data transparency and confidence.
- Combine with our System Monitoring and Data Management services for complete care of your campaign.

The easier way to manage wind data

Wind Resource Assessment

The Data Portal empowers developers to make informed site selection and project feasibility decisions by providing a centralised, high-integrity view of up-to-date wind measurement data.

- Connects seamlessly with ZX 300, ZX 300e Lidars and met masts.
- Applies standardised, automated quality control processes to ensure data reliability.
- Offers configurable visualisations of time series, wind roses, and data availability metrics.
- Enables instant sharing of validated data with stakeholders and consultants.

Reporting and Compliance

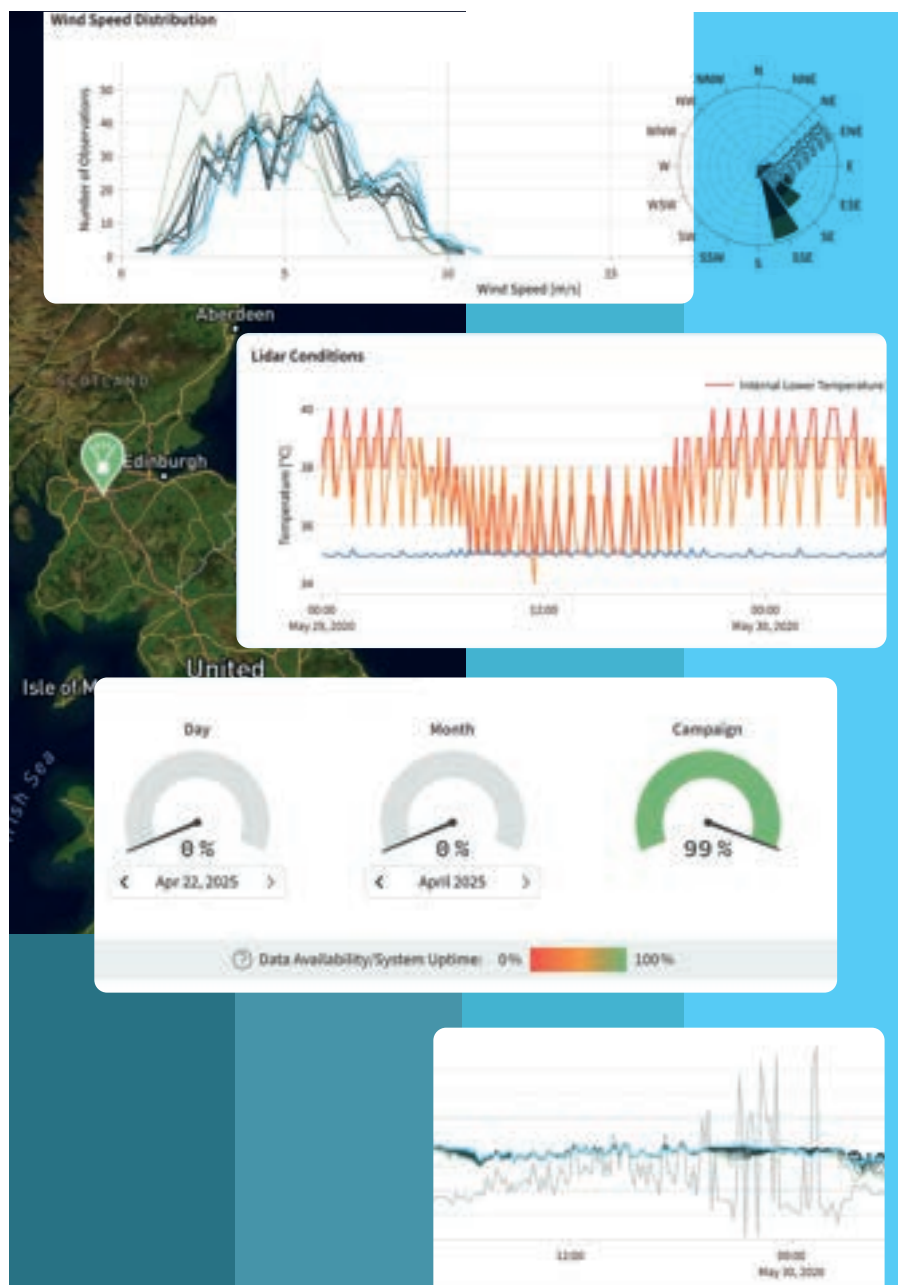
Reduce the time and complexity associated with generating internal or regulatory reports. The Data Portal supports streamlined compliance and communication with key stakeholders.

- Monthly reports in DOCX and PDF formats.
- Integration of Lidar data into a single report.
- Shared access with read-only permissions for external stakeholders.

Campaign Collaboration

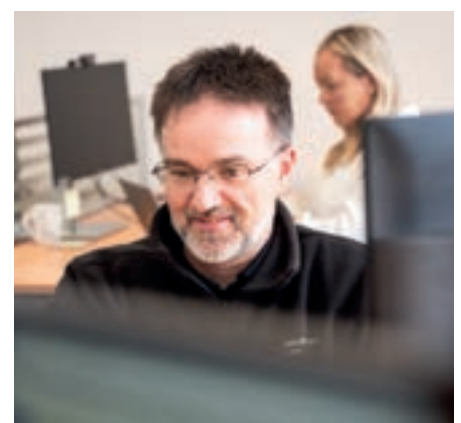
Designed with teams in mind, the Data Portal fosters seamless collaboration across teams and organisations.

- Role-based user access to manage team visibility and editing rights.
- Centralised dashboard for multiple campaigns and clients.
- Data downloads in flexible formats for further analysis.
- Web-based access with no local installation required.



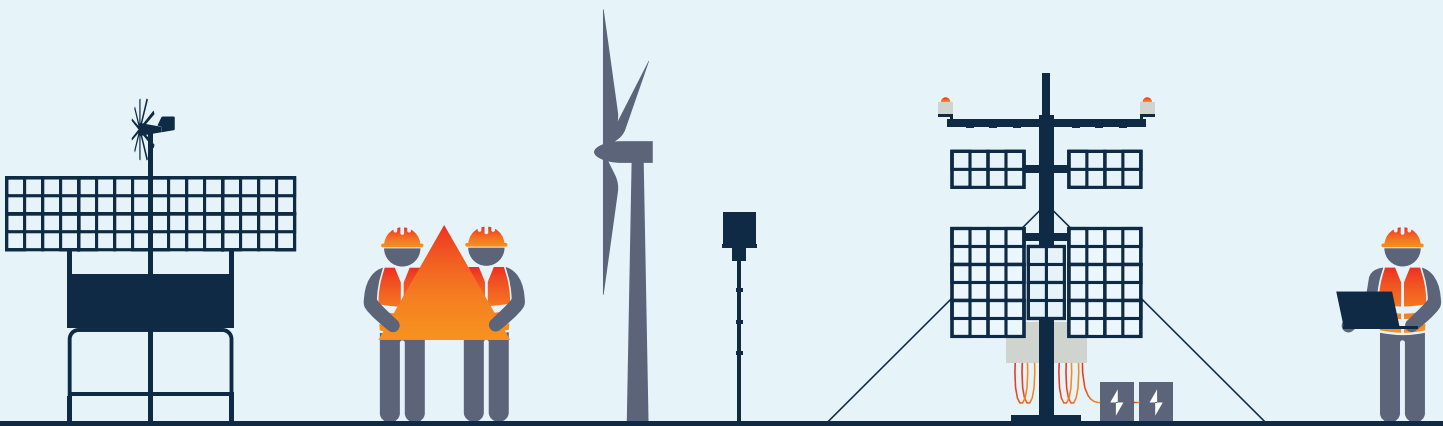
Key data available

- System Uptime
- Data Availability
- Wind Speed
- Wind Direction
- Wind Roses
- Wind Speed Profiles and Distribution
- Turbulence
- Environmental Conditions including Rain, Fog/Cloud, Temperature and Relative Humidity



Field Services

With the expertise, you expect.



Wind project field support

ZX Measurement Services provides specialist field support for the deployment, operation, and maintenance of wind measurement campaigns.

Whether it's installing a met mast, mobilising a wind Lidar, or troubleshooting equipment in the field, our team delivers a professional, reliable service tailored to your project's demands.

**Experienced engineers. Safe delivery.
Reliable data.**

Why Choose ZX Measurement Services for Field Services?

Supported technologies

- Ground-based Remote Sensing Devices
- Turbine-mounted Lidars
- Remote power solutions (ZX Power)
- Solar Monitoring Equipment
- Noise Monitoring Equipment
- Lattice met masts
- Tilt met masts



The easier way to manage wind data

Experienced Engineers

Decades of combined expertise across Lidar, met masts, and hybrid wind measurement campaigns.

Safe & Compliant

All work carried out to the highest safety standards and in accordance with IEC and industry guidelines.

Flexible Deployment

From single-site installations to multi-site campaigns, our team scales with your needs.

End-to-End Service

Covering installation, commissioning, inspections, maintenance, and decommissioning.

Trusted and Accepted Technology

Proven equipment and validated methods ensure consistent, high-quality measurement results.

Rapid Response

Our field engineers are equipped to react quickly to site demands, minimising downtime and maximising data availability.



Lidar Fleet Management

We treat your Lidars like our own.



Taking care of your hardware

At ZX Measurement Services, we apply the same care, attention, and expertise to your Lidars that we use to keep our own fleet performing at its very best.

Our Fleet Management service ensures your wind measurement assets operate reliably, safely, and with maximum uptime – so you can focus on your project, not your hardware.

Reliable systems. Trusted data. Expert management.

Why Choose ZX Measurement Services for Lidar Fleet Management?

Trusted and Experienced

Our team manages one of the world's largest Lidar fleets, delivering thousands of successful campaigns across the UK and Europe.

Peak Performance

Preventative maintenance and proactive monitoring keep your Lidars operating at full potential.

Data Confidence

Regular QA checks ensure the accuracy, reliability, and bankability of your data.

Flexible Support

From single units to multi-country fleets, our service scales to meet your needs.

Simpler Logistics

We handle transport, servicing, and deployment, ensuring your units are ready when and where you need them.

Assured Service

Managed using the same proven processes and quality standards as our in-house fleet.

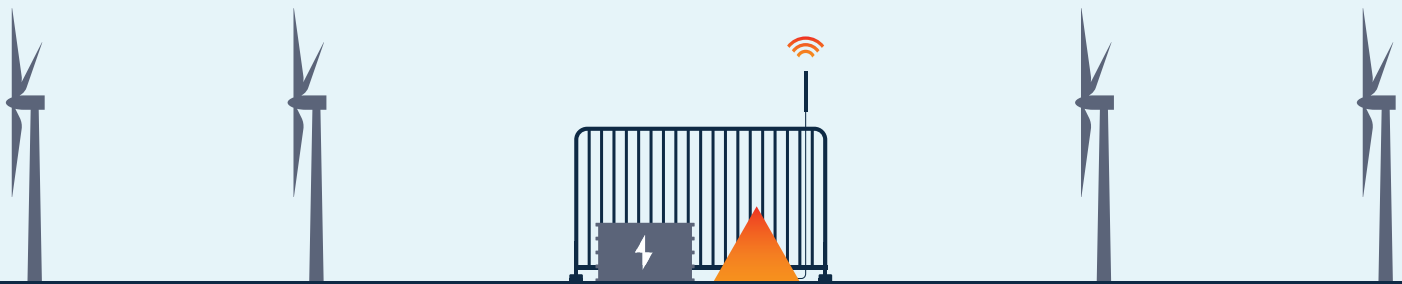
Supported technologies

- ZX 300 and ZX 300e vertical profiling Lidars
- WindCube vertical profiling Lidars
- ZX TM nacelle-mounted Lidars
- WindCube nacelle-mounted Lidars



Noise Monitoring Support Services

Easy wind data supporting noise compliance studies.



Noise studies in wind projects

ZX Measurement Services provides fast and accurate wind data to support noise compliance and monitoring studies.

Using the industry-leading ZX wind Lidars, we deliver reliable, high-quality measurements of wind speed and direction – enabling confident noise correlation and analysis for operational or regulatory purposes.

Accurate wind data for effective noise assessment and compliance.

Why Choose ZX Measurement Services Noise Monitoring Support?

Fast Deployment

Pre-validated wind Lidar ready for rapid mobilisation at short notice.

Accurate Measurements

High-quality wind data that supports compliant noise studies.

Simple Logistics

Lightweight, easily transported Lidar systems reduce logistical complexity and speed up setup on site.

Flexible Rental Packages

Options tailored to short-term noise campaigns or extended compliance monitoring.

Expert Support

From setup to data QA, our experienced engineers ensure smooth delivery and reliable results.

Trusted and Accepted Technology

Decades of proven field use and industry validation ensure confidence in measurements for every campaign.



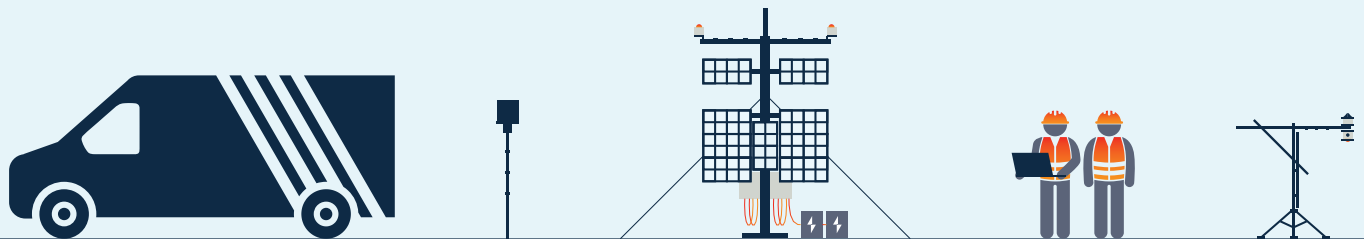
Technical specification

Lidar technology	ZX 300	ZX 300e
Range	10-300 metres (Lidar measurement) 0-10 metres (onboard met weather station)	10-300 metres (Lidar measurement) 0-10 metres (onboard met weather station)
Heights measured	10 User configurable 1 Additional met weather station measurement	10 User configurable 1 Additional met weather station measurement
Power consumption	69W	44W
Classification	IEC 61400-50-2 0% standard uncertainty, 30-100m	IEC 61400-50-2 0% standard uncertainty, 21-200m



Solar Resource Assessment and Monitoring

Solar resource, reliably measured.



SRA & SRM

ZX Measurement Services offer complete and integrated Solar Resource Assessment and Monitoring solutions for utility-scale photovoltaic (PV) projects.

Our solution provides bankable solar data to support developers, financiers, and operators in the design, financing, and optimisation of solar farms.

Accurate, reliable, and trusted solar measurements – from concept into operation.

Why Choose ZX Solar Resource Assessment?

Bankable Measurements

High-quality, accurate data to support investment-grade decision-making and project financing.

Complete Solutions

From sensor supply and installation to data collection and reporting for feasibility studies.

Custom Configurations

Pyranometers, albedometers, temperature sensors, and weather stations tailored to your site conditions.

Flexible Packages

Options designed for short-term resource campaigns (typically 6–24 months) to meet your project needs.

Expert Support

Our experienced engineers manage every stage to ensure safe, compliant, and precise data delivery.

Why Choose ZX Solar Resource Monitoring?

Performance Assurance

Continuous, real-time monitoring to optimise plant efficiency and detect issues early.

Integrated Solutions

From hardware installation to data management and reporting for operational excellence.

Custom Configurations

Irradiance sensors, temperature probes, and weather stations tailored for your plant's environment.

Scalable Packages

Flexible options for ongoing monitoring, predictive maintenance, and compliance reporting.

Expert Guidance

Our team provides full lifecycle support to ensure accurate data and maximum system uptime.



ZX Measurement Services

**Contact us today to start
your wind data campaign**

Email sales@zxmeasurements.com

Call +44 (0) 141 473 5708

Web ZXMeasurements.com

